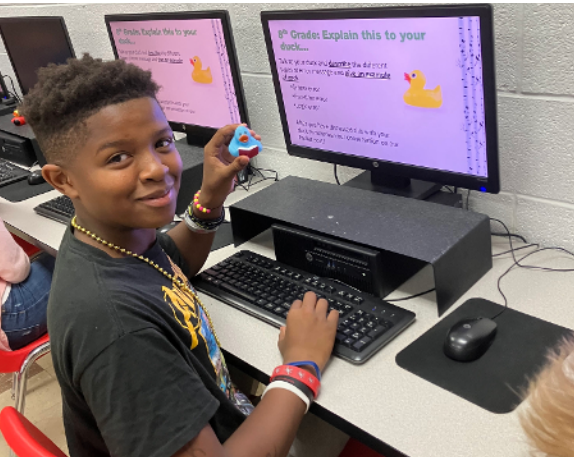




FIELD LOCAL SCHOOLS QUALITY PROFILE



The Field Local Schools serve the proud communities of Brimfield and Suffield, Ohio. Built on strong traditions, Field Schools prepares every student for a successful future. The goal of this Quality Profile is to showcase what makes Field an outstanding school district.

FIELDLOCALSCHOOLS.ORG

Message from the Superintendent



David O. Heflinger *Superintendent*

Welcome to the Field Local School District. I want to thank you for taking time to review our Quality Profile and learn about the district. Everyone at Field is excited to help our students on the journey from child to young adult.

At each level, our staff welcomes students and assists them in growing. Our elementary schools are warm and welcoming. They help students attain the skills necessary for success. Our middle school helps students explore areas of interest and expand their skills. This all prepares them for high school. At FHS, students refine interests and explore possible directions for the future. Whether students choose a path leading to a career, college, or military, they leave Field with the skills and tools necessary for success.

We appreciate the support of our community. No school district can be strong and successful without a strong and committed community. Working together, we are able to

provide the students at Field Local Schools with a great school career and a bright future.

Please read and enjoy the information in this profile. I know you will find Field Local Schools to be a great place for young people.

Thank you for your time.

GO FALCONS!



Our District

Our Community

- Population: 10,387 Brimfield (2018 data)
- Population: 6,286 Suffield (2018 data)
- Natural areas such as Wingfoot State Park, Cranberry Creek Dog Park, Lions Community Parks, and Town Center Park.
- Rich appreciation for community history through the Kelso House and the Suffield Historical Society
- Lions Clubs, Suffield League, Port-Summit Rotary and numerous churches



Brimfield Town Center



Wingfoot Lake State Park



Our School District

- Field Local School District covers 46 square miles in the southwestern corner of Portage County.
- Classified as a small town district but has rural and continually expanding suburban areas.
- Buildings include: Field High School, Field Middle School, Brimfield Elementary & Suffield Elementary
- 47.4% of teaching staff with at least one Master's Degree.
- Field Local Schools has offered all day kindergarten since 1980.

District Facts

- 2,032 Students enrolled in Field Local Schools
- 76 Students attending Maplewood JVS
- 52 Acres of land (central campus)
- 341,876 Square feet of building space
- 1.5 Employees maintain main campus grounds and athletic fields
- 15 Buses and 1 van transporting students
- 144,757 Lunches and 31,819 breakfasts served in the 2022-2023 school year



Academics

Engage, Empower and Explore

Field Local Schools recognizes the potential in every student. We strive each day to help our students prepare for the future by engaging them in meaningful work, empowering them with skills and knowledge, and giving them opportunities to explore . . .

- **All buildings have access to outdoor classroom spaces**
- **Gifted services for grades 3-12**
- **Chromebooks in all classrooms**
- **Individualized learning through personalized learning, small group instruction and co-teaching**
- **Summer reading programs**

High School

Classes for College Credit

- *College Writing I & II*
- *U.S. History*
- *World History*
- *AP Calculus*
- *AP Computer Science Principles*

Maplewood Career Center offers 22 programs

Edmentum Online Learning opportunities

Math and Writing Lab

High School Electives

- *Accounting*
- *Advanced Art and Production*
- *American Culture*
- *American History Through Film*
- *Anatomy and Physiology*
- *Ceramics*
- *Coding/Programming*
- *College & Career Readiness*
- *Culinary Exploration*
- *Design Techniques*
- *Entrepreneurship*
- *Environmental Science*
- *Financial Algebra*
- *Forensics*
- *The Great War and WWII*
- *Harry Potter*
- *Intro to Law*
- *Jewelry Design*
- *Marketing Principles*
- *Mythology*
- *Pop Culture*
- *Psychology*
- *Quantitative Reasoning*
- *Sales and Retail*
- *Sociology*
- *Spanish*
- *Statistics and Probability*
- *Web Design*
- *Weight Lifting*
- *World Geography*
- *Zoology*



Middle School

Honors Language Arts, Math and Science offered

STEM and Robotics opportunities

Middle School Electives

- *Art*
- *Band*
- *Choir*
- *Computer Science Discoveries*
- *Gamify Coding and Robotics*
- *Healthy Lifestyles*
- *Interactive Animations and Games*
- *Music*
- *Physical Education*
- *Technology Today*

Elementary Schools

Site of 5 Star preschool

Student Reading Buddies

Technology Classes

Accessible Playground Equipment

Outdoor classroom spaces

Title I Tutors and Reading Interventions

College Credit Plus

Partner Universities

- *Kent State University*
- *The University of Akron*
- *The Ohio State University*
- *Youngstown State*
- *Stark State College*
- *Cedarville*
- *Walsh University*

Student Services



Field Local Schools provides academic interventions for students of all levels. Our staff includes:

- 2 Speech Pathologists
- 2 School Psychologists
- 1 Registered Nurse
- 4 Medical Assistants
- 5 School Counselors
- Services provided by
 - Occupational Therapists
 - Physical Therapists
 - Audiologists
 - Teacher of the Visually Impaired
- Whole grade gifted screening in grades 2-8
- Orientation & Mobility Specialist
- Elementary Literacy Coach
- Summer Intervention & After School Tutoring
- Behavior Intervention Specialist
- English Language Learner Services



14.13% Gifted Students

13.8% Special Education Students

7.5% Title I Reading Students

Educational Alternatives for At-Risk Students

Includes dropout prevention, credit recovery and online options

Focus on Ohio's Whole Child Framework

S.O.A.R. with PBIS

Positive Behavioral Intervention and Supports

Expectations for students are based on Safe, Outstanding Accountable and Respectful behaviors

Physical Health Services

Includes Flu Clinic, Mobile Dentist and Immunization Clinics

Online Resources

Includes online encyclopedias and databases through Infohio, Gizmos, Overdrive, Lexia, RAZ Kids, Schoolinks, No Red Ink and more

The Arts

Field Local Schools has a long tradition of supporting the visual and performing arts.

Visual Arts

- **Community Art Displays**
 - Portage County Randolph Fair
 - Portage County Art Show
 - Elementary Art Shows
 - Spring Middle School Art Show
- **Participation in the Statewide Child Abuse and Neglect Awareness Contest**
- **Paint a Plow Project**
- **Summer Sewing Class**
- **Ignite Inspiration Scholastic Contest**
- **Student Artwork Incorporated into Building Beautification**
- **Statewide Fire Safety and Severe Weather Poster Contests**
- **Doodle for Google Contest**
- **Art to Remember Family Keepsakes Fundraiser**
- **Field Middle School Yearbook Contest**
- **Summer Art Classes at Field Middle School**

Musical Arts

- **OMEA Large Group and Solo & Ensemble Contests**
- **KSU and U of A Honor Band Participation**
- **Marching Band**
 - Shows and Competitions
 - Football Halftime Performances
 - Disney and Ft. Myers, Florida
- **Performances**
 - Holiday Christmas Tree Lightings
 - Community Organizations
 - Sporting Events: Cleveland Cavs and Cleveland Monsters



100% of the students at the elementary level have exposure to art, music, physical education, technology and library each week

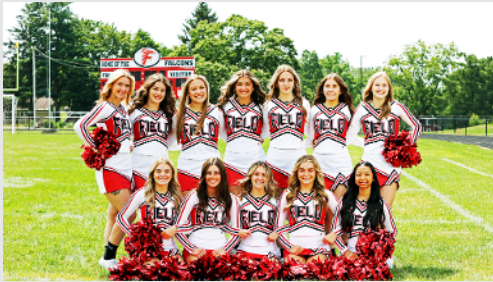


Athletics

Athletic Teams

- **Baseball***
- **Basketball**
- **Cheerleading**
- **Cross Country**
- **Football**
- **Golf***
- **Soccer**
- **Softball***
- **Tennis***
- **Track**
- **Volleyball**
- **Wrestling**

*High School only



Player of the Year/All Ohio

- **Baseball '21, '23**
- **Boys Soccer '21**
- **Girls Soccer '18**
- **Softball '19, '21, '22**
- **Track '21**

Team of the Year

- **Softball '22**

State Qualifier

- **Cross Country '20, '21**
- **Track '18, '19, '21, '22**
- **Wrestling '16, '17, '18**

Coach of Year

- **Baseball '21, '22**
- **Cross Country '21**
- **Boys Soccer '20, '21**
- **Girls Soccer '18, '20**
- **Softball '19, '21, '22**
- **Tennis '20**

PTC/MAC CHAMPIONSHIPS

Baseball '21

Boys Soccer '19

Girls Soccer '18, '21, '22

Softball '19, '21 & '22



*Statistics Based on 2018 - Spring 2023 Seasons

Student Leadership and Activities



- Student-Led Conferences
- Art to Remember
- DARE
- Math 24 Tournament
- County and State Spelling Bee
- Mad Science
- Ski Club
- Elementary Peer Reading Buddies
- 5th Grade Camp
- 5th Grade Chorus
- Student Lighthouse Team
- Town Hall II
- MAC Student Leadership Council
- 8th Grade trip to Washington D.C.
- College & Career Fair

- Student Council
- Teen Institute
- Drama Club
- Quiz Bowl
- Girls Who Code
- National Honor Society
- National Junior Honor Society
- Just Write
- Writing Club
- Band & Choir
- Spanish Club
- LEO Club
- Junior Achievement
- Fellowship of Christian Athletes
- Girls on the Run



Suffield Elementary was awarded Lighthouse Status for the Leader In Me program. They are 1 of only 15 schools in Ohio with this distinction.

Brimfield Elementary was recognized by OAESA as a 2018 Hall of Fame School Award Winner and was awarded the Ohio PBIS Bronze Award in 2019, 2022 and Silver Award in 2021.



Honors and Awards

**Teacher, Kelli Taylor & Rookie Teacher of the Year, Delaney Schumacher
Nominations from Summit ESC**

**Lifetime Achievement Award Nominee, Bernadette Moore - Volunteerism
Summit ESC**

NEA Student Success Grant

Suffield League Audio Equipment Donation

Homeless Target Support Grant

Portage County Retired Teacher Grant

GPD Employee's Foundation Grant

Michael Burkholder Grant

**2016 Ohio State
Teacher of the Year**

Teresa Cianchetti

1st Grade Suffield Elementary

**PBIS AWARD
Bronze and Silver
Award Winning**

**Field Local Schools
was ranked 2nd in
Portage County for
the district
performance index
based on Ohio State
test scores for each
student**

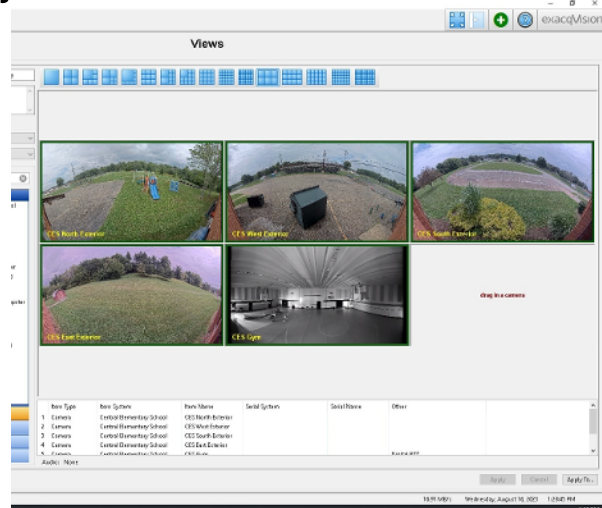


Facilities Improvements

Buildings and Grounds Projects Update Fall 2023

Over the past 3 years, the district has been able to complete several projects to our facilities and grounds. These projects were made possible using district money and federal grants received due to the pandemic. The following is a partial list.

- Security screening at buildings
- Security cameras at buildings
- New camera system for buses
- New district wide radio system
- New doors
- HVAC upgrades and improvements
- Picnic tables
- Sidewalk around the stadium
- New band bleachers
- Stadium restroom upgrades
- ID readers
- Roof repairs
- Painting
- The district has also been able to purchase 5 buses and 3 vans for transporting students.



Community Outreach



- **Student-Led Fundraisers**
 - Hygiene Drive
 - Sock-It
 - Food Drive
 - Suffield CARES
 - Color Fun Run
 - Peanut Butter and Jelly Drive
- **CARE Team**
- **Coat Closet**
- **Giving Tree**
- **Safer Futures Collection**
- **Bread Mission**
- **Crayola Recycling Program**
- **Fall Festival**
- **Plastic Bag Recycle Program**
- **Rotary Camp**
- **Falcon Fest**
- **Leo Club**
- **Mila's Hope and Rowyn's Dreams Playground**



Community Involvement

Big Red Community

Community-based fundraising organization that promotes unity and school pride for students and athletes

Lions Club

Community service organization, sponsors Leo Club at Field Middle School

PTA

Sponsors clubs, provides volunteers for public events, offers scholarships to 5th grade camp, purchases technology and other educational items to enhance student learning

Booster Clubs

Athletic, Band and Choir Boosters help supplement these extra-curricular activities



PTA Events

- Cinderella Ball
- Walk-a-thon
- Monster Jam

Veterans Day Events

- Family Leadership Night
- Senior to Senior Breakfast
- United Way Guest Readers
- Back to School Celebration
- National Honor Society Blood Drive
- National Honor Society Egg Hunt
- RePlay for Kids
- Falcon Family Game Night
- Curriculum Night
- Parent Education Night



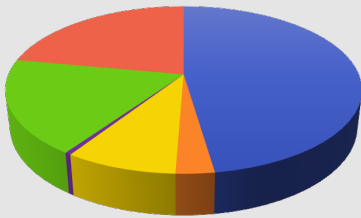
Fiscal Stewardship

Field Local Schools continues to provide a quality education to students while retaining its commitment to fiscal accountability. We are dedicated to the efficient disbursement of taxpayer dollars and work to ensure that the majority of those dollars continue to be spent on classroom instruction.

Auditor of State Award - Field Local Schools has received the Auditor of State Award in recognition of a "clean audit" and "exemplary record keeping" for every fiscal year from 2013 to the present.

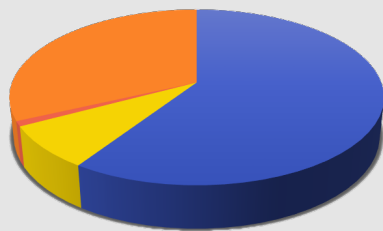


2022-2023 Expenditures



- Salary**
\$12,602,988
≈53%
- Purchased Services**
\$3,358,668
≈14%
- Supplies & Materials**
\$866,439
≈4%
- Other** (Auditor Fees, ESC Fees, Liability Insurance, etc.)
\$1,630,018
≈7%
- Capital Improvement**
\$168,497
≈1%
- Benefits**
\$5,033,799
≈21%

2022-2023 Revenues



- Local Taxes**
\$16,353,009
≈63%
- State Revenue**
\$7,603,335
≈29%
- Other Local** (Tuition, Participation Fees, TIF, etc.)
\$1,870,832
≈7%
- Other** (Transfers/Advances)
\$312,677
≈1%

\$2.2 Million Saved

Bond refinancing will save community tax payers \$2,218,053 in debt service costs

Annual Amount Spent Per Student	
Field Local Schools	\$11,911.31
State Average	\$14,685.85

BEHIND THE NUMBERS

The Ohio Department of Education's expenditure per pupil calculation represents the total amount each district spends on administration, building operations, instruction, pupil support and staff support divided by the district's average daily membership.

OUR GOAL

Field Local Schools continually investigates new opportunities for lowering costs through shared services, cooperative purchasing, Educational Service Center resources, and energy conservation in an effort to reduce costs, while maintaining a high-quality educational environment.